



## RoHS Test Report

No. 201307708R

Date: Jul. 10, 2013

Page1 of 12

APPLICANT : Shenzhen Smart Team Technology Ltd

Xutai Industrial Zone, Long Wo Road, Long Tian Village, Keng Zi  
Town, Longgang District, Shenzhen, Guangdong, China

### REPORT ON THE SUBMITTED SAMPLE SAID TO BE

SAMPLE NAME : Rechargeable Flashlight

TYPE /MODEL : PP26650C

MANUFACTURER : Shenzhen Smart Team Technology Ltd

TEST REPORT NUMBER : 201307708R

SAMPLE RECEIVED DATE : Jul. 06, 2013

TESTING PERIOD : Jul. 06, 2013 to Jul. 10, 2013

\*\*\*\*\*

TEST REQUESTED: TO COMBINE THE TEST RESULT FOR THE SUBMITTED SAMPLE

\*\*\*\*\*

### CONCLUSION:

<u>TESTED SAMPES</u>	<u>STANDARD</u>	<u>RESULT</u>
SUBMITTED SAMPLE	EUROPEAN DIRECTIVE 2011/65/EU ON THE RESTRICTION OF THE USE OF CERTAIN HAZARDOUS SUBSTANCES (RoHS Directive)	PASS

\*\*\*\*\*FOR FURTHER DETAILS, PLEASE REFER TO THE FOLLOWING PAGE(S)\*\*\*\*\*

Signed for and on behalf of ANBOTEK COMPLIANCE LABORATORY LIMITED

Written by Adeline Fan

Inspected by Terry Tian

Approved Jeff Zhu  
Jeff Zhu / Manager

This Test Report is issued by the Company subject to its General Conditions of Service printed overleaf. Attention is drawn to the limitations of liability, indemnification and jurisdictional issues defined therein. The results shown in this report refer only to the sample(s) tested unless otherwise stated. This Test Report cannot be reproduced, except in full, without prior written permission of the company.

### **Shenzhen Anbotek Compliance Laboratory Limited**

Address: 1/F., Building 1, SEC Industrial Park, No. 0409 Qianhai Road, Nanshan District, Shenzhen, Guangdong, China  
Tel: (86) 755-26066544 Fax: (86)755-26014772 Email: service@anbotek.com Http: //www.anbotek.com.cn

**Testing method:**

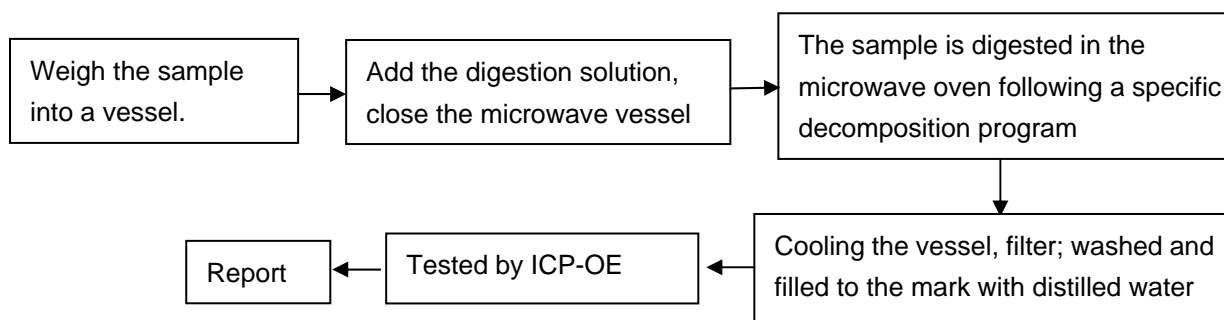
Testing Item	Measuring method	Instrument	Report Limit
Cadmium (Cd)	EN 1122B	ICP-AES	2 mg/kg
Lead (Pb)	EPA 3050B	ICP-AES	2 mg/kg
Mercury (Hg)	EPA 3052	ICP-AES	2 mg/kg
Chromium(VI) [Cr(VI)]	EPA 3060A	UV-VIS	2 mg/kg
Polybrominated Biphenyl (PBB)	83/264/EEC	GC/MS	5 mg/kg
Polybrominated Diphenylether (PBDE)	83/264/EEC	GC/MS	5 mg/kg

**Method detection Limits:**

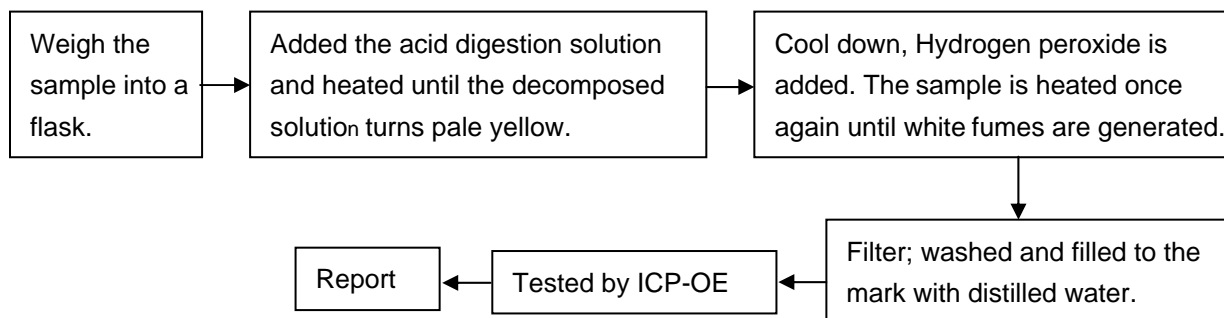
Test Item	Unit	Acceptable Limit
Cadmium (Cd)	ppm	100
Lead (Pb)	ppm	1000
Mercury (Hg)	ppm	1000
Chromium(VI) [Cr(VI)]	ppm	1000
Polybrominated Biphenyl (PBB)	ppm	1000
Polybrominated Diphenylether (PBDE)	ppm	1000

**Test flow:**

## 1. To Determine lead Content:



## 2. To Determine Cadmium Content:

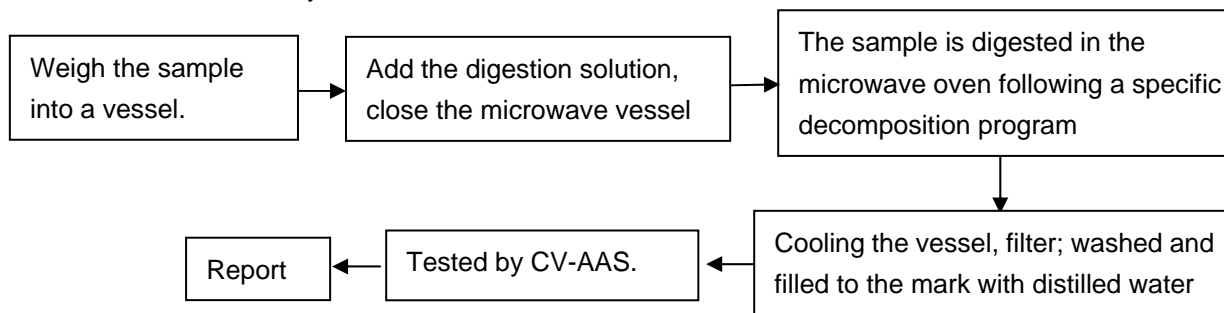


This Test Report is issued by the Company subject to its General Conditions of Service printed overleaf. Attention is drawn to the limitations of liability, indemnification and jurisdictional issues defined therein. The results shown in this report refer only to the sample(s) tested unless otherwise stated. This Test Report cannot be reproduced, except in full, without prior written permission of the company.

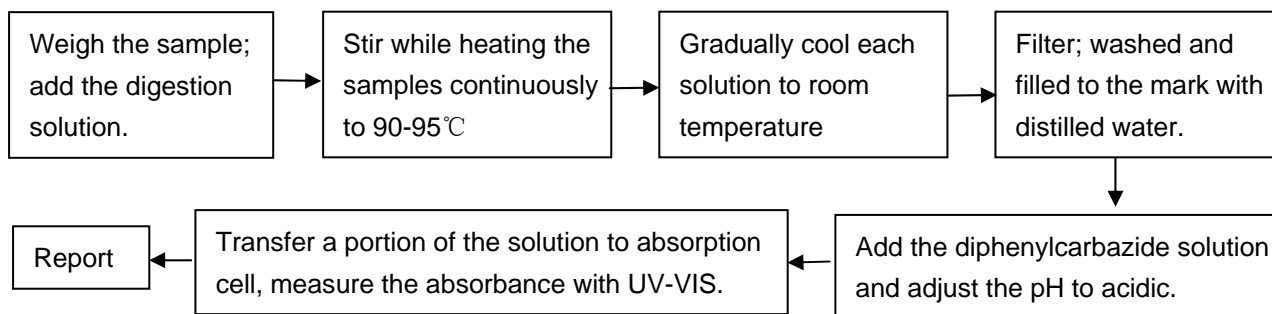
**Shenzhen Anbotek Compliance Laboratory Limited**

Address: 1/F., Building 1, SEC Industrial Park, No. 0409 Qianhai Road, Nanshan District, Shenzhen, Guangdong, China  
 Tel: (86) 755-26066544 Fax: (86)755-26014772 Email: service@anbotek.com Http: //www.anbotek.com.cn

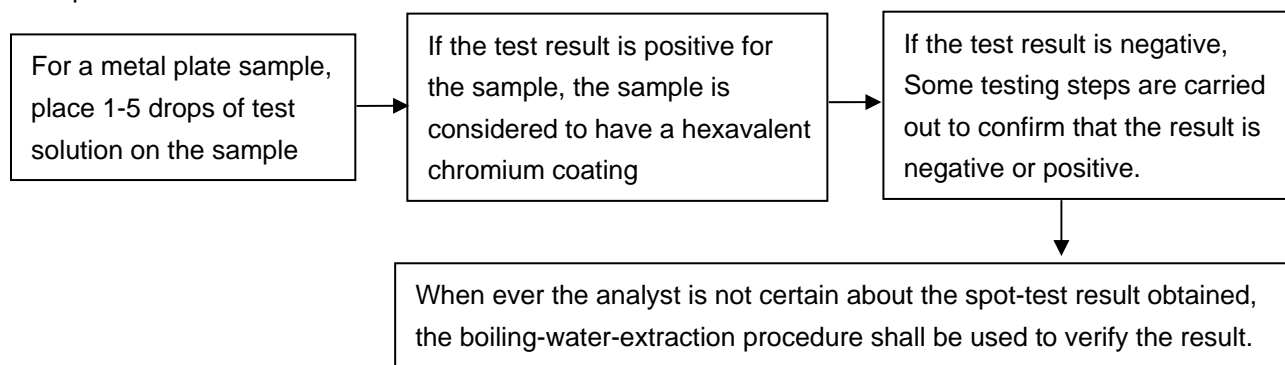
3. To Determine Mercury Content:



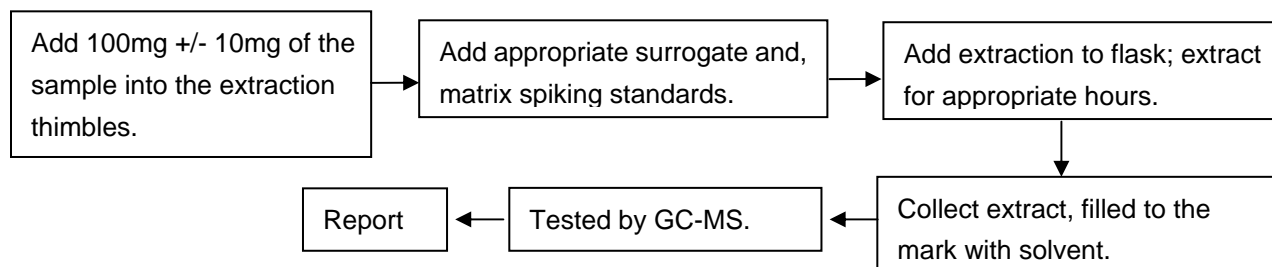
4. To Determine Hexavalent Chromium Content:



5. To Determine Hexavalent Chromium Content in metals:  
spot-test:



6. To Determine PBBs / PBDEs Content:



This Test Report is issued by the Company subject to its General Conditions of Service printed overleaf. Attention is drawn to the limitations of liability, indemnification and jurisdictional issues defined therein. The results shown in this report refer only to the sample(s) tested unless otherwise stated. This Test Report cannot be reproduced, except in full, without prior written permission of the company.

**Shenzhen Anbotek Compliance Laboratory Limited**

Address: 1/F., Building 1, SEC Industrial Park, No. 0409 Qianhai Road, Nanshan District, Shenzhen, Guangdong, China  
Tel: (86) 755-26066544 Fax: (86)755-26014772 Email: service@anbotek.com Http: //www.anbotek.com.cn



## RoHS Test Report

No. 201307708R

Date: Jul. 10, 2013

Page4 of 12

### Test Results

Item	Unit	MDL	No. <u>1-1</u>	No. <u>1-2</u>	No. <u>1-3</u>	No. <u>2-1</u>	No. <u>2-2</u>
Lead Content (Pb)	ppm	2	N.D.	N.D.	N.D.	27	N.D.
Cadmium (Cd)	ppm	2	N.D.	N.D.	N.D.	N.D.	N.D.
Mercury Content(Hg)	ppm	2	N.D.	N.D.	N.D.	N.D.	N.D.
Hexavalent Chromium Content [Cr(VI)]	ppm	2	N.D.	Negative	Negative	Negative	Negative
Flame Retardants							
Polybrominated biphenyls (PBBs)	ppm	5	N.D.	N.A.	N.A.	N.A.	N.A.
Polybrominated Diphenylethers(PBDEs)	ppm	5	N.D.	N.A.	N.A.	N.A.	N.A.

Item	Unit	MDL	No. <u>2-3</u>	No. <u>2-4</u>	No. <u>3-1</u>	No. <u>3-2</u>	No. <u>3-3</u>
Lead Content (Pb)	ppm	2	243	N.D.	27	N.D.	243
Cadmium (Cd)	ppm	2	N.D.	N.D.	N.D.	N.D.	N.D.
Mercury Content(Hg)	ppm	2	N.D.	N.D.	N.D.	N.D.	N.D.
Hexavalent Chromium Content [Cr(VI)]	ppm	2	Negative	N.D.	Negative	Negative	Negative
Flame Retardants							
Polybrominated biphenyls (PBBs)	ppm	5	N.A.	N.D.	N.A.	N.A.	N.A.
Polybrominated Diphenylethers(PBDEs)	ppm	5	N.A.	N.D.	N.A.	N.A.	N.A.

Item	Unit	MDL	No. <u>3-4</u>	No. <u>4-1</u>	No. <u>4-2</u>	No. <u>4-3</u>	No. <u>4-4</u>
Lead Content (Pb)	ppm	2	N.D.	27	N.D.	243	N.D.
Cadmium (Cd)	ppm	2	N.D.	N.D.	N.D.	N.D.	N.D.
Mercury Content(Hg)	ppm	2	N.D.	N.D.	N.D.	N.D.	N.D.
Hexavalent Chromium Content [Cr(VI)]	ppm	2	N.D.	Negative	Negative	Negative	N.D.
Flame Retardants							
Polybrominated biphenyls (PBBs)	ppm	5	N.D.	N.A.	N.A.	N.A.	N.D.
Polybrominated Diphenylethers(PBDEs)	ppm	5	N.D.	N.A.	N.A.	N.A.	N.D.

This Test Report is issued by the Company subject to its General Conditions of Service printed overleaf. Attention is drawn to the limitations of liability, indemnification and jurisdictional issues defined therein. The results shown in this report refer only to the sample(s) tested unless otherwise stated. This Test Report cannot be reproduced, except in full, without prior written permission of the company.

#### Shenzhen Anbotek Compliance Laboratory Limited

Address: 1/F., Building 1, SEC Industrial Park, No. 0409 Qianhai Road, Nanshan District, Shenzhen, Guangdong, China  
Tel: (86) 755-26066544 Fax: (86)755-26014772 Email: service@anbotek.com Http: //www.anbotek.com.cn

**RoHS Test Report**

No. 201307708R

Date: Jul. 10, 2013

Page5 of 12

Item	Unit	MDL	<u>No.</u> <u>5-1</u>	<u>No.</u> <u>5-2</u>	<u>No.</u> <u>5-3</u>	<u>No.</u> <u>5-4</u>	<u>No.</u> <u>6-1</u>
Lead Content (Pb)	ppm	2	27	N.D.	243	N.D.	27
Cadmium (Cd)	ppm	2	N.D.	N.D.	N.D.	N.D.	N.D.
Mercury Content(Hg)	ppm	2	N.D.	N.D.	N.D.	N.D.	N.D.
Hexavalent Chromium Content [Cr(VI)]	ppm	2	Negative	Negative	Negative	N.D.	Negative
Flame Retardants							
Polybrominated biphenyls (PBBs)	ppm	5	N.A.	N.A.	N.A.	N.D.	N.A.
Polybrominated Diphenylethers(PBDEs)	ppm	5	N.A.	N.A.	N.A.	N.D.	N.A.

Item	Unit	MDL	<u>No.</u> <u>6-2</u>	<u>No.</u> <u>6-3</u>	<u>No.</u> <u>6-4</u>	<u>No.</u> <u>7</u>	<u>No.</u> <u>8</u>
Lead Content (Pb)	ppm	2	N.D.	243	N.D.	85	N.D.
Cadmium (Cd)	ppm	2	N.D.	N.D.	N.D.	N.D.	N.D.
Mercury Content(Hg)	ppm	2	N.D.	N.D.	N.D.	N.D.	N.D.
Hexavalent Chromium Content [Cr(VI)]	ppm	2	Negative	Negative	N.D.	Negative	N.D.
Flame Retardants							
Polybrominated biphenyls (PBBs)	ppm	5	N.A.	N.A.	N.D.	N.A.	N.D.
Polybrominated Diphenylethers(PBDEs)	ppm	5	N.A.	N.A.	N.D.	N.A.	N.D.

Item	Unit	MDL	<u>No.</u> <u>9-1</u>	<u>No.</u> <u>9-2</u>	<u>No.</u> <u>10</u>	<u>No.</u> <u>11</u>	<u>No.</u> <u>12</u>
Lead Content (Pb)	ppm	2	N.D.	N.D.	N.D.	5	354
Cadmium (Cd)	ppm	2	N.D.	N.D.	N.D.	N.D.	N.D.
Mercury Content(Hg)	ppm	2	N.D.	N.D.	N.D.	N.D.	N.D.
Hexavalent Chromium Content [Cr(VI)]	ppm	2	N.D.	N.D.	N.D.	N.D.	N.D.
Flame Retardants							
Polybrominated biphenyls (PBBs)	ppm	5	N.D.	N.D.	N.D.	N.D.	N.D.
Polybrominated Diphenylethers(PBDEs)	ppm	5	N.D.	N.D.	N.D.	N.D.	N.D.

This Test Report is issued by the Company subject to its General Conditions of Service printed overleaf. Attention is drawn to the limitations of liability, indemnification and jurisdictional issues defined therein. The results shown in this report refer only to the sample(s) tested unless otherwise stated. This Test Report cannot be reproduced, except in full, without prior written permission of the company.

**Shenzhen Anbotek Compliance Laboratory Limited**

Address: 1/F., Building 1, SEC Industrial Park, No. 0409 Qianhai Road, Nanshan District, Shenzhen, Guangdong, China  
Tel: (86) 755-26066544 Fax: (86)755-26014772 Email: service@anbotek.com Http: //www.anbotek.com.cn



# RoHS Test Report

No. 201307708R

Date: Jul. 10, 2013

Page6 of 12

Item	Unit	MDL	No. 13	No. 14-1	No. 14-2	No. 15-1	No. 15-2
Lead Content (Pb)	ppm	2	339	230910 <sup>&lt;1&gt;</sup>	N.D.	N.D.	N.D.
Cadmium (Cd)	ppm	2	N.D.	N.D.	N.D.	N.D.	N.D.
Mercury Content(Hg)	ppm	2	N.D.	N.D.	N.D.	N.D.	N.D.
Hexavalent Chromium Content [Cr(VI)]	ppm	2	N.D.	N.D.	Negative	N.D.	Negative
Flame Retardants							
Polybrominated biphenyls (PBBs)	ppm	5	N.D.	N.D.	N.A.	N.D.	N.A.
Polybrominated Diphenylethers(PBDEs)	ppm	5	N.D.	N.D.	N.A.	N.D.	N.A.

Item	Unit	MDL	No. 16	No. 17	No. 18	No. 19	No. 20
Lead Content (Pb)	ppm	2	N.D.	N.D.	24	3537 <sup>&lt;1&gt;</sup>	N.D.
Cadmium (Cd)	ppm	2	N.D.	N.D.	N.D.	N.D.	N.D.
Mercury Content(Hg)	ppm	2	N.D.	N.D.	N.D.	N.D.	N.D.
Hexavalent Chromium Content [Cr(VI)]	ppm	2	N.D.	N.D.	Negative	N.D.	N.D.
Flame Retardants							
Polybrominated biphenyls (PBBs)	ppm	5	N.D.	N.D.	N.A.	N.D.	N.D.
Polybrominated Diphenylethers(PBDEs)	ppm	5	N.D.	N.D.	N.A.	N.D.	N.D.

Item	Unit	MDL	No. 21	No. 22	No. 23-1	No. 23-2	No. 23-3
Lead Content (Pb)	ppm	2	N.D.	11	N.D.	N.D.	N.D.
Cadmium (Cd)	ppm	2	N.D.	N.D.	N.D.	N.D.	N.D.
Mercury Content(Hg)	ppm	2	N.D.	N.D.	N.D.	N.D.	N.D.
Hexavalent Chromium Content [Cr(VI)]	ppm	2	N.D.	Negative	N.D.	N.D.	N.D.
Flame Retardants							
Polybrominated biphenyls (PBBs)	ppm	5	N.D.	N.A.	N.D.	N.D.	N.D.
Polybrominated Diphenylethers(PBDEs)	ppm	5	N.D.	N.A.	N.D.	N.D.	N.D.

This Test Report is issued by the Company subject to its General Conditions of Service printed overleaf. Attention is drawn to the limitations of liability, indemnification and jurisdictional issues defined therein. The results shown in this report refer only to the sample(s) tested unless otherwise stated. This Test Report cannot be reproduced, except in full, without prior written permission of the company.

## Shenzhen Anbotek Compliance Laboratory Limited

Address: 1/F., Building 1, SEC Industrial Park, No. 0409 Qianhai Road, Nanshan District, Shenzhen, Guangdong, China  
Tel: (86) 755-26066544 Fax: (86)755-26014772 Email: service@anbotek.com Http: //www.anbotek.com.cn



## RoHS Test Report

No. 201307708R

Date: Jul. 10, 2013

Page 7 of 12

Item	Unit	MDL	<u>No.</u> <u>23-4</u>	<u>No.</u> <u>23-5</u>	<u>No.</u> <u>23-6</u>	<u>No.</u> <u>23-7</u>	<u>No.</u> <u>23-8</u>
Lead Content (Pb)	ppm	2	N.D.	N.D.	N.D.	N.D.	N.D.
Cadmium (Cd)	ppm	2	N.D.	N.D.	N.D.	N.D.	N.D.
Mercury Content(Hg)	ppm	2	N.D.	N.D.	N.D.	N.D.	N.D.
Hexavalent Chromium Content [Cr(VI)]	ppm	2	N.D.	N.D.	N.D.	N.D.	N.D.
Flame Retardants							
Polybrominated biphenyls (PBBs)	ppm	5	N.D.	N.D.	N.D.	N.D.	N.D.
Polybrominated Diphenylethers(PBDEs)	ppm	5	N.D.	N.D.	N.D.	N.D.	N.D.

Item	Unit	MDL	<u>No.</u> <u>23-9</u>	<u>No.</u> <u>23-10</u>	<u>No.</u> <u>23-11</u>	<u>No.</u> <u>23-12</u>	<u>No.</u> <u>23-13</u>
Lead Content (Pb)	ppm	2	N.D.	N.D.	N.D.	N.D.	N.D.
Cadmium (Cd)	ppm	2	N.D.	N.D.	N.D.	N.D.	N.D.
Mercury Content(Hg)	ppm	2	N.D.	N.D.	N.D.	N.D.	N.D.
Hexavalent Chromium Content [Cr(VI)]	ppm	2	N.D.	N.D.	N.D.	N.D.	N.D.
Flame Retardants							
Polybrominated biphenyls (PBBs)	ppm	5	N.D.	N.D.	N.D.	N.D.	N.D.
Polybrominated Diphenylethers(PBDEs)	ppm	5	N.D.	N.D.	N.D.	N.D.	N.D.

Item	Unit	MDL	<u>No.</u> <u>23-14</u>	<u>No.</u> <u>23-15</u>	<u>No.</u> <u>23-16</u>	<u>No.</u> <u>23-17</u>	<u>No.</u> <u>23-18</u>
Lead Content (Pb)	ppm	2	N.D.	N.D.	N.D.	18	17
Cadmium (Cd)	ppm	2	N.D.	N.D.	N.D.	N.D.	N.D.
Mercury Content(Hg)	ppm	2	N.D.	N.D.	N.D.	N.D.	N.D.
Hexavalent Chromium Content [Cr(VI)]	ppm	2	N.D.	N.D.	N.D.	N.D.	N.D.
Flame Retardants							
Polybrominated biphenyls (PBBs)	ppm	5	N.D.	N.D.	N.D.	N.D.	N.D.
Polybrominated Diphenylethers(PBDEs)	ppm	5	N.D.	N.D.	N.D.	N.D.	N.D.

This Test Report is issued by the Company subject to its General Conditions of Service printed overleaf. Attention is drawn to the limitations of liability, indemnification and jurisdictional issues defined therein. The results shown in this report refer only to the sample(s) tested unless otherwise stated. This Test Report cannot be reproduced, except in full, without prior written permission of the company.

### Shenzhen Anbotek Compliance Laboratory Limited

Address: 1/F., Building 1, SEC Industrial Park, No. 0409 Qianhai Road, Nanshan District, Shenzhen, Guangdong, China  
Tel: (86) 755-26066544 Fax: (86) 755-26014772 Email: service@anbotek.com Http: //www.anbotek.com.cn

**RoHS Test Report**

No. 201307708R

Date: Jul. 10, 2013

Page8 of 12

Item	Unit	MDL	No. <u>23-19</u>	No. <u>23-20</u>	No. <u>23-21</u>	No. <u>24</u>	No. <u>25</u>
Lead Content (Pb)	ppm	2	N.D.	N.D.	N.D.	N.D.	N.D.
Cadmium (Cd)	ppm	2	N.D.	N.D.	N.D.	N.D.	N.D.
Mercury Content(Hg)	ppm	2	N.D.	N.D.	N.D.	N.D.	N.D.
Hexavalent Chromium Content [Cr(VI)]	ppm	2	N.D.	N.D.	N.D.	N.D.	N.D.
Flame Retardants							
Polybrominated biphenyls (PBBs)	ppm	5	N.D.	N.D.	N.D.	N.D.	N.D.
Polybrominated Diphenylethers(PBDEs)	ppm	5	N.D.	N.D.	N.D.	N.D.	N.D.

Item	Unit	MDL	No. <u>26-1</u>	No. <u>26-2</u>			
Lead Content (Pb)	ppm	2	10	N.D.			
Cadmium (Cd)	ppm	2	N.D.	N.D.			
Mercury Content(Hg)	ppm	2	N.D.	N.D.			
Hexavalent Chromium Content [Cr(VI)]	ppm	2	Negative	N.D.			
Flame Retardants							
Polybrominated biphenyls (PBBs)	ppm	5	N.A.	N.D.			
Polybrominated Diphenylethers(PBDEs)	ppm	5	N.A.	N.D.			

- NOTE: (1) ppm=mg/kg.  
(2) N.D.= NOT DETECTED (<MDL)  
(3) N.A.= NOT APPLICABLE  
(4) Negative = Absence of CrVI coating

DISCLAIM: Anbotek take no responsibility for any mistakes caused by inaccurate and /or invalid information submitted by the applicant.

Remark<1>: According to the declaration from the client, Lead (Pb) in specimen 14-1 &19 was exempted by EU RoHS Directive 2011/65/EU based on: Electrical and electronic components containing lead in a glass or ceramic other than dielectric ceramic in capacitors, e.g. piezoelectronic devices, or in a glass or ceramic matrix compound.

This Test Report is issued by the Company subject to its General Conditions of Service printed overleaf. Attention is drawn to the limitations of liability, indemnification and jurisdictional issues defined therein. The results shown in this report refer only to the sample(s) tested unless otherwise stated. This Test Report cannot be reproduced, except in full, without prior written permission of the company.

**Shenzhen Anbotek Compliance Laboratory Limited**

Address: 1/F., Building 1, SEC Industrial Park, No. 0409 Qianhai Road, Nanshan District, Shenzhen, Guangdong, China  
Tel: (86) 755-26066544 Fax: (86)755-26014772 Email: service@anbotek.com Http: //www.anbotek.com.cn





## RoHS Test Report

No. 201307708R

Date: Jul. 10, 2013

Page9 of 12

### SAMPLE APPEARANCE DESCRIPTION

Item No.	Part Name	Description	Test Report No.
1	USB	---	---
1-1	PBT(WHITE PLASTIC CORE)	Light blue plastic	SGS CANEC1213118512
1-2	SPCC	Silver-grey metal	SGS CANEC1213118509
1-3	FILM	Silvery and silver-grey film	SGS CANEC1213118515
2	3*6*5H TOUCH SWITCH	---	CTI RLNBF00012973000101C
2-1	REED	Bimetallic strip	CTI RLNBF00012973000101C
2-2	COVER PLATE	Silver plating metal	CTI RLNBF00012973000101C
2-3	FOUNDATION	Silver plating metal	CTI RLNBF00012973000101C
2-4	PRESS-BUTTON	Black plastic	CTI RLNBF00012973000101C
3	4.5*4.5*3.8H TOUCH SWITCH	---	CTI RLNBF00012973000102C
3-1	REED	Bimetallic strip	CTI RLNBF00012973000102C
3-2	COVER PLATE	Silver plating metal	CTI RLNBF00012973000102C
3-3	FOUNDATION	Silver plating metal	CTI RLNBF00012973000102C
3-4	PRESS-BUTTON	Black plastic	CTI RLNBF00012973000102C
4	6*6*5H SUPPORT TOUCH SWITCH	---	CTI RLNBF00012973000103C
4-1	REED	Bimetallic strip	CTI RLNBF00012973000103C
4-2	COVER PLATE	Silver plating metal	CTI RLNBF00012973000103C
4-3	FOUNDATION	Silver plating metal	CTI RLNBF00012973000103C
4-4	PRESS-BUTTON	Black plastic	CTI RLNBF00012973000103C
5	12*12*5H TOUCH SWITCH	---	CTI RLNBF00012973000104C
5-1	REED	Bimetallic strip	CTI RLNBF00012973000104C
5-2	COVER PLATE	Silver plating metal	CTI RLNBF00012973000104C
5-3	FOUNDATION	Silver plating metal	CTI RLNBF00012973000104C
5-4	PRESS-BUTTON	Black plastic	CTI RLNBF00012973000104C
6	6*6*2.5H TOUCH SWITCH	---	CTI RLNBF00012973000105C
6-1	REED	Bimetallic strip	CTI RLNBF00012973000105C
6-2	COVER PLATE	Silver plating metal	CTI RLNBF00012973000105C
6-3	FOUNDATION	Silver plating metal	CTI RLNBF00012973000105C
6-4	PRESS-BUTTON	Black plastic	CTI RLNBF00012973000105C
7	LEAD-FREE	Silver-grey metal wire	SGS CANEC1302079501

This Test Report is issued by the Company subject to its General Conditions of Service printed overleaf. Attention is drawn to the limitations of liability, indemnification and jurisdictional issues defined therein. The results shown in this report refer only to the sample(s) tested unless otherwise stated. This Test Report cannot be reproduced, except in full, without prior written permission of the company.

#### **Shenzhen Anbotek Compliance Laboratory Limited**

Address: 1/F., Building 1, SEC Industrial Park, No. 0409 Qianhai Road, Nanshan District, Shenzhen, Guangdong, China  
Tel: (86) 755-26066544 Fax: (86)755-26014772 Email: service@anbotek.com Http: //www.anbotek.com.cn



## RoHS Test Report

No. 201307708R

Date: Jul. 10, 2013

Page10 of 12

Item No.	Part Name	Description	Test Report No.
8	IC	Black body w/ silvery metal pin(mixed)	SGS CANEC1209557201
9	KEYPAD LIGHT	---	SGS CE/2012/70633A
9-1	CHIP	Transparent glue and chip	SGS CE/2012/70633A
9-2	BODY	Body(excluding the transparent glue and chip)	SGS CE/2012/70633A
10	WIRE	Red/white/black wire skin	PONY H03213044404D
11	CPFCP(SY)	Copper clad brown laminate w/ green printing General purpose chip	SGS CANEC1206972101
12	GENERAL PURPOSE CHIP RESISTORS	resistors(black/white/silver general purpose chip resistors) General purpose chip	SGS KA/2012/C0588
13	GENERAL PURPOSE CHIP RESISTORS	resistors(black/white/silver general purpose chip resistors)	SGS KA/2012/C0589
14	SMD GLASS DIODE	---	SGS CANEC1215784102
14-1	BODY	Orange body(finished product)	SGS CANEC1215784102
14-2	METAL	Silvery metal(semi-product)	SGS CANEC1215784102
15	SOP28L	---	SGS SHAEC1206020003
15-1	BODY	Black body	SGS SHAEC1206020003
15-2	METAL	Silvery metal	SGS SHAEC1206020003
16	POLYMER LI-ION BATTERY	Battery	SGS CANEC1210777209 A01
17	SOT-23	Black body w/ white printing & silvery metal pin	SGS CANEC1306648301
18	SOT-23-5L(12R)	Black solid with silvery pin(mix all)	SGS SHAEC1303258509
19	CHIP RESISTANCE	Chip resistance	SGS CANEC1302632204
20	SMD INDUCTOR	Gray metal particle with silvery metal edge & black printing(mixed)	SGS CANEC1206392002
21	POLYCARBONATE	Transparent polycarbonate	SGS KA/2011/C1964
22	ALUMINUM	Silver-grey metal tube	SGS CANEC1302328104

This Test Report is issued by the Company subject to its General Conditions of Service printed overleaf. Attention is drawn to the limitations of liability, indemnification and jurisdictional issues defined therein. The results shown in this report refer only to the sample(s) tested unless otherwise stated. This Test Report cannot be reproduced, except in full, without prior written permission of the company.

### Shenzhen Anbotek Compliance Laboratory Limited

Address: 1/F., Building 1, SEC Industrial Park, No. 0409 Qianhai Road, Nanshan District, Shenzhen, Guangdong, China  
Tel: (86) 755-26066544 Fax: (86)755-26014772 Email: service@anbotek.com Http: //www.anbotek.com.cn



**RoHS Test Report**      No. 201307708R      Date: Jul. 10, 2013      Page 11 of 12

Item No.	Part Name	Description	Test Report No.
23	ACRYLONITRILE/ BUTADIENE/ STYRENE COPOLYMERIZATION RESIN	---	SGS CE/2012/54994A
23-1	BEIGE	Beige PVC compound	SGS CE/2012/54994A
23-2	BEIGE	Beige PVC compound	SGS CE/2012/54994A
23-3	BEIGE	Beige PVC compound	SGS CE/2012/54994A
23-4	BEIGE	Beige PVC compound	SGS CE/2012/54994A
23-5	BEIGE	Beige PVC compound	SGS CE/2012/54994A
23-6	BEIGE	Beige PVC compound	SGS CE/2012/54994A
23-7	BEIGE	Beige PVC compound	SGS CE/2012/54994A
23-8	BLACK	Black PVC compound	SGS CE/2012/54994A
23-9	BEIGE	Beige PVC compound	SGS CE/2012/54994A
23-10	BEIGE	Beige PVC compound	SGS CE/2012/54994A
23-11	BEIGE	Beige PVC compound	SGS CE/2012/54994A
23-12	BLACK	Black PVC compound	SGS CE/2012/54994A
23-13	BLACK	Black PVC compound	SGS CE/2012/54994A
23-14	BEIGE	Beige PVC compound	SGS CE/2012/54994A
23-15	BEIGE	Beige PVC compound	SGS CE/2012/54994A
23-16	BLACK	Black PVC compound	SGS CE/2012/54994A
23-17	WHITE	White PVC compound	SGS CE/2012/54994A
23-18	WHITE	White PVC compound	SGS CE/2012/54994A
23-19	TRANSPARENT	Transparent PVC compound	SGS CE/2012/54994A
23-20	CREAM	Cream PVC compound	SGS CE/2012/54994A
23-21	CREAM	PVC compound	SGS CE/2012/54994A
24	PVC SHEET	COLORLESS TRANSPARENT PLASTIC	CTI RLSHE001299820001
25	TAJ SERIES	Mixed all ppts	SGS CE/2011/C5458
26	SOP8(8R)-PINLEAD PART; SOP8(8R)-PACKAGE PART	---	SGS SHAEC1303258503
26-1	PIN	Silvery metal	SGS SHAEC1303258503
26-2	BODY	Black solid with silvery pin (mix all)	SGS SHAEC1303258503

\*\*\*\*\* End of Report \*\*\*\*\*

This Test Report is issued by the Company subject to its General Conditions of Service printed overleaf. Attention is drawn to the limitations of liability, indemnification and jurisdictional issues defined therein. The results shown in this report refer only to the sample(s) tested unless otherwise stated. This Test Report cannot be reproduced, except in full, without prior written permission of the company.

**Shenzhen Anbotek Compliance Laboratory Limited**

Address: 1/F., Building 1, SEC Industrial Park, No. 0409 Qianhai Road, Nanshan District, Shenzhen, Guangdong, China  
Tel: (86) 755-26066544      Fax: (86) 755-26014772      Email: service@anbotek.com      Http: //www.anbotek.com.cn

**APPENDIX A**

**Photograph of Sample**



This Test Report is issued by the Company subject to its General Conditions of Service printed overleaf. Attention is drawn to the limitations of liability, indemnification and jurisdictional issues defined therein. The results shown in this report refer only to the sample(s) tested unless otherwise stated. This Test Report cannot be reproduced, except in full, without prior written permission of the company.

**Shenzhen Anbotek Compliance Laboratory Limited**

Address: 1/F., Building 1, SEC Industrial Park, No. 0409 Qianhai Road, Nanshan District, Shenzhen, Guangdong, China  
Tel: (86) 755-26066544 Fax: (86)755-26014772 Email: service@anbotek.com Http: //www.anbotek.com.cn