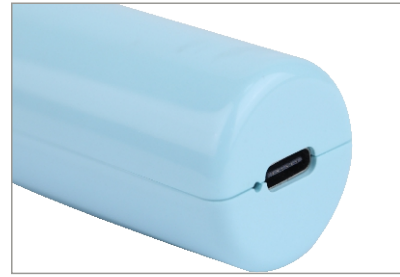


Model No.2103

PHOTOTHERAPY CARE COMB



FEATURES

• REDUCES HAIR LOSS

Used low-energy red light (LLLT) to directly reach the hair root, wake up the hair follicles, regulate oil and prevent hair loss.

• STRENGTHENS HAIR

Red light stimulates the activity of the scalp, enhances the absorption of nutrients by the scalp, strengthens the hair roots and reduces the growth of white hair.

• MASSAGE

Point-pressured massage, promote scalp blood circulation, accelerate metabolism, sterilize and remove mites. It helps improve hair follicle immunity, enhance scalp health and improve sleep quality.

• COMB TEETH DESIGN

With comb teeth distribution technology, separate hair strands to avoid light blocking and ensure maximum energy absorption. Making hair look more voluminous and healthier, fuller and more aromatic hair.

• SIMPLE OPERATION

Easy to use. Just one click to start immediately.

• LIGHT WEIGHT & PORTABLE

Small and lightweight body, convenient to carry. Perfect for home use or travel so hair care can be anytime, anywhere.

• CHARGING

Fast & convenient Type-C charging for energy renewal. Non-stop maintenance to keep your hair healthy.

• ADD-VALUE MATERIAL

Anti-static and far-infrared materials added to the comb teeth part help reduce static electricity generated during combing your hair and increase scalp blood circulation.

OPERATION

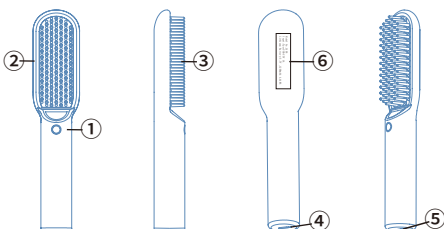
- Press the button once on the comb to start working immediately.
- Red light ON at the large comb teeth panel to illuminate all scalp area.
- Press the button once again to turn off the light.

CHARGING

Charge the comb with the supplied charging cable at the Type C input port. Maximum charging current is 1A.

During charging, red light on and turns blue light when fully charged

COMPONENTS



- ① ON/OFF button
- ② RedLED
- ③ CombTeeth
- ④ Charging Input - Type C Charging Port
- ⑤ LEDIndicatorLight
- ⑥ Ratinglabel

PRODUCT COLORS



White



Blue



Pink

SPECIFICATION

Model	2013
LED wavelength	625-660nm
Battery Capacity	1200mAh/3.7V (4.44Wh)
Charging Current	Type-C 5V 1A
Charging Time	~2 hours
Run Time	~5 hours continuously
Product Material	ABS
Product Size	185x39x25.2mm
Product Weight	88g